

Centrifugal Compressor Spare Parts Product Manual

Main Products

iflowparts specializes in high-quality compressor spare parts, including diffusers, gear high-speed shafts/low-speed shafts, diverters (volute), impeller bolts, oil seals, tilting pad bearings, thrust bearings, impellers, gas seals, temperature sensors, clamp rings, PLC modules, primary filters, secondary air filters, tank heaters, oil mist filter assemblies, oil filter elements, oil filters, oil mist filter elements, pressure transmitters, etc.

Replacement of Original Products

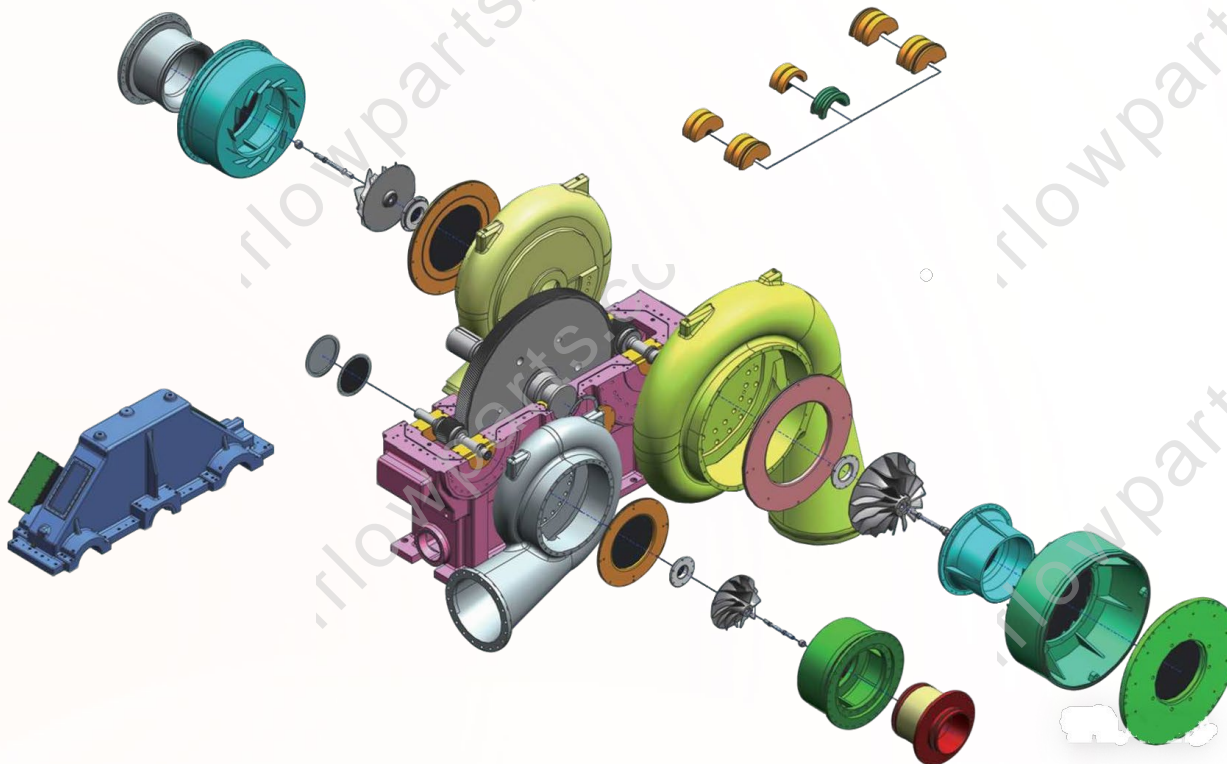
Our products reliably replace core components of centrifugal air compressors from top brands like Atlas, Ingersoll Rand, Samsung, IHI Sullair, Fusheng, Cooper, and SeAH, etc. Backed by advanced technology and strong supply chain management, we deliver trusted quality and excellent after-sales support.

Our products are widely applied in chemical, pharmaceutical, steel, shipbuilding, food, and other key industries, iflowparts is your go-to partner for reliable compressor parts solutions.

Original Drawings

Original Materials

Original Process



1. Diffuser
2. Gear High/Low-Speed Shafts
3. Diverter (Volute)
4. Impeller Bolt
5. Oil Seal
6. Tilting Pad Bearing
7. Thrust Bearing
8. Impeller
9. Gas Seal
10. Temperature Sensor

11. Clamp Ring
12. PLC Module
13. Primary Filter
14. Secondary Air Filter
15. Tank Heater
16. Oil Mist Filter Assembly
17. Oil Filter Element
18. Oil Filter
19. Oil Mist Filter Element
20. Pressure Transmitter

Content

01 Key Components of Fluid Power

- 1.1 Diffuser
- 1.2 Diverter (Volute)
- 1.3 Impeller

02 Key Components of Transmission and Support System

- 2.1 Gear High/Low-Speed Shafts
- 2.2 Tilting Pad Bearing
- 2.3 Thrust Bearing

03 Sealing and Connection Solutions

- 3.1 Oil Seal
- 3.2 Gas Seal
- 3.3 Clamp Ring

04 Fastening and Sensing Monitoring Components

- 4.1 Impeller Bolt
- 4.2 Temperature Sensor
- 4.3 Pressure Transmitter

05 Control System and Auxiliary Devices

- 5.1 PLC Module
- 5.2 Filter, Oil Filter and Oil Filter Element
- 5.3 Tank Heater
- 5.4 Cooler

Diffuser

Core Pneumatic Component for Efficient Energy Conversion, Enhancing Compression System Performance

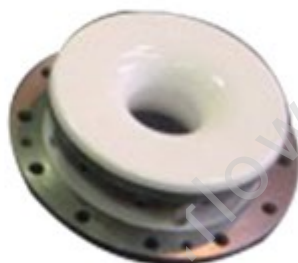
1.1



Diverter (Volute)

Precisely Guides Airflow Distribution, Boosting Unit Operational Stability

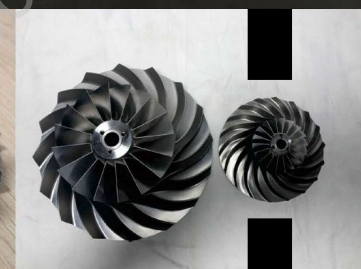
1.2



Impeller

High-Precision Dynamic Balance Design, Delivering High-Efficiency Under High-Speed Rotation

1.3



Gear High/Low-Speed Shafts

High-Strength Alloy, Ensuring Stable Power Transmission

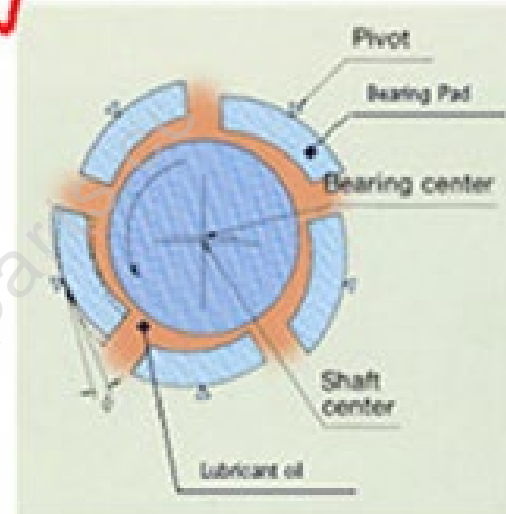
2.1



Tilting Pad Bearing

Adaptive Support, Providing Reliable Lubrication in Extreme Conditions

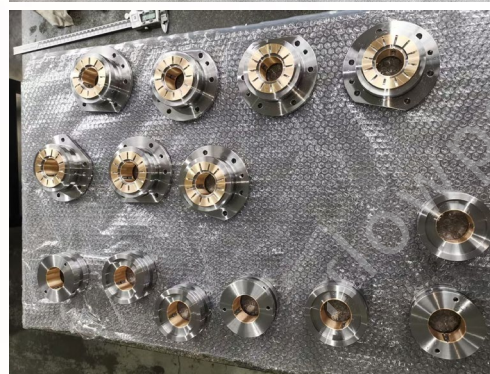
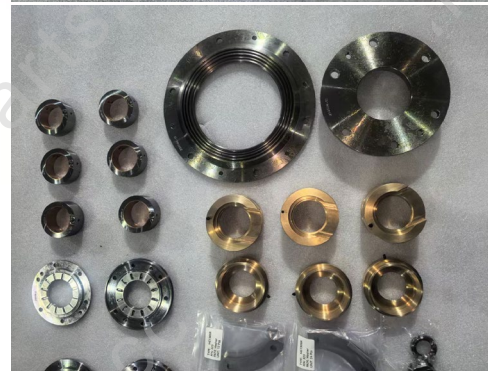
2.2



Thrust Bearing

Bears Bidirectional Axial Loads, Ensuring Rotor Axial Positioning Accuracy

2.3



Oil Seal, Gas Seal & Clamp Ring

Multi-Interface Design, Preventing Lubricant Leakage & Contamination Ingress

3



Fastening & Sensing Monitoring Components

Ultra-High-Strength Fastening + Precise Parameter Monitoring | Secure Components + Real-Time Operation Status Feedback

4



Impeller Bolt



Temperature Sensor



Pressure Transmitter

PLC Module

Integrated Control Hub | Real-Time Logic & Interlock Protection

5.1



IHI compressor control System



SeaH air Compressor control System



Centrifugal air Compressor control System



Centrifugal air Compressor joint control System



AtlasCopco control System



Samsung control System



Atlas Z4 Series control System

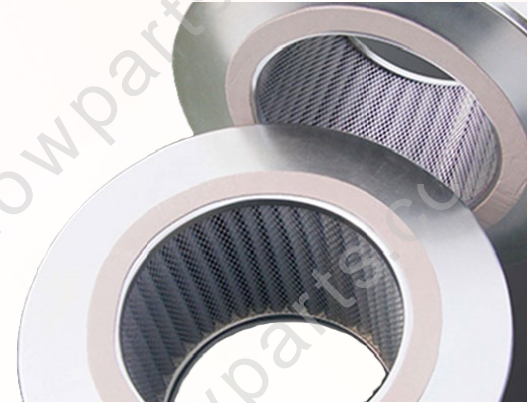


Samsung control System

Filter, Oil Filter Element & Oil Filter

Multi-Stage Filtration, Meeting Strict Cleanliness Standards

5.2



Tank Heater

Low-Temp Startup Device, Maintaining Lubricant Fluidity & System Usability

5.3



Cooler

Prevents Overheating, Improves Efficiency, Ensures Stable System Operation

5.4



THANKS

Contact Us

E-mail: iflowparts@gmail.com
Whatsup and Wechat: +86 18061999964
Website: <https://www.iflowparts.com>